

7 - 1

Qualitative Graphing

7-2

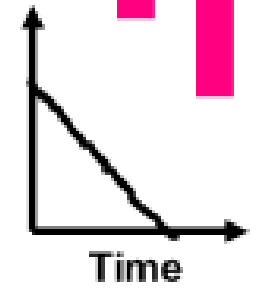
The Coordinate Plane

Match each situation with one of the graphs shown:

a.) The speed of a roller coaster as it goes steadily up, then faster down a hill

b.) The speed of a subway as it pulls into a station, stops, then pulls out.

A.



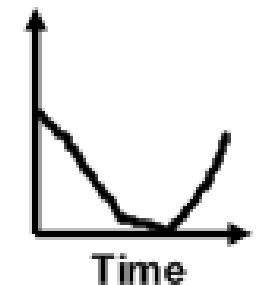
B.



C.



D.

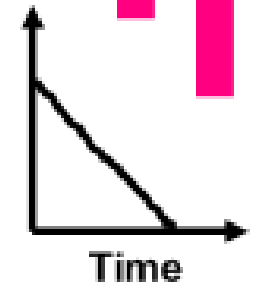


Match each situation with one of the graphs shown:

c.) Your speed on a bike as you ride up a hill, rest, then ride down the other side.

d.) Your distance from the ground as you swing on a swing.

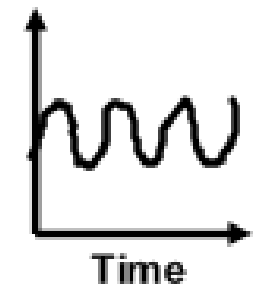
A.



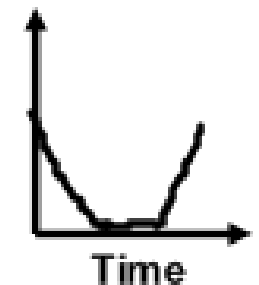
B.



C.



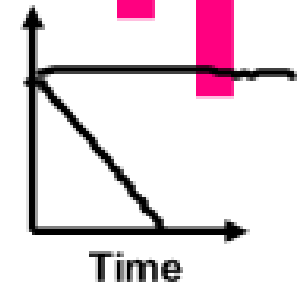
D.



Match each situation with one of the graphs shown:

e.) The amount of popcorn in a bowl during a movie.

A.



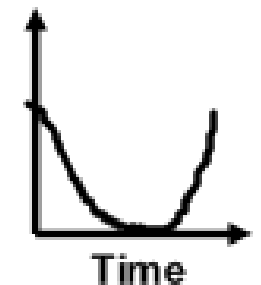
B.

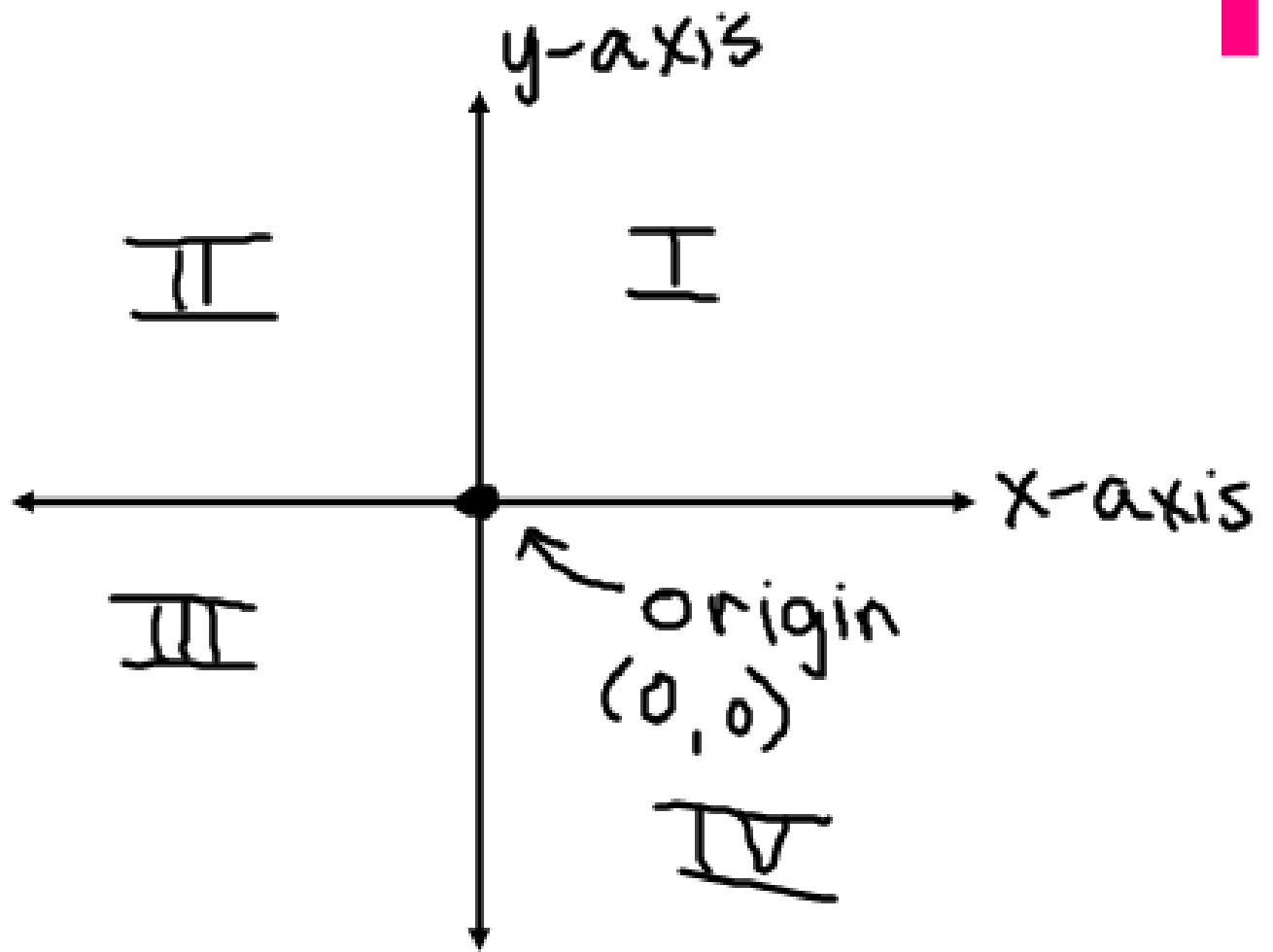


C.

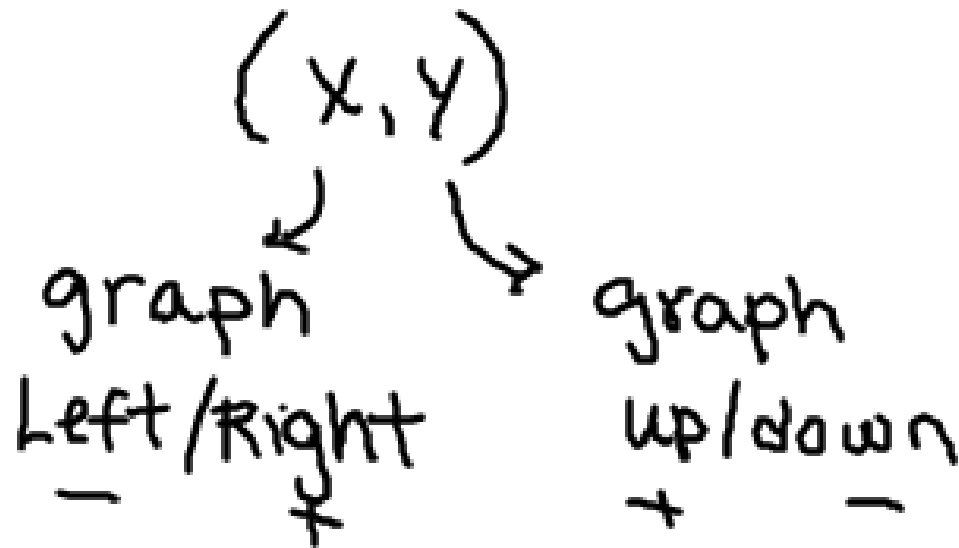


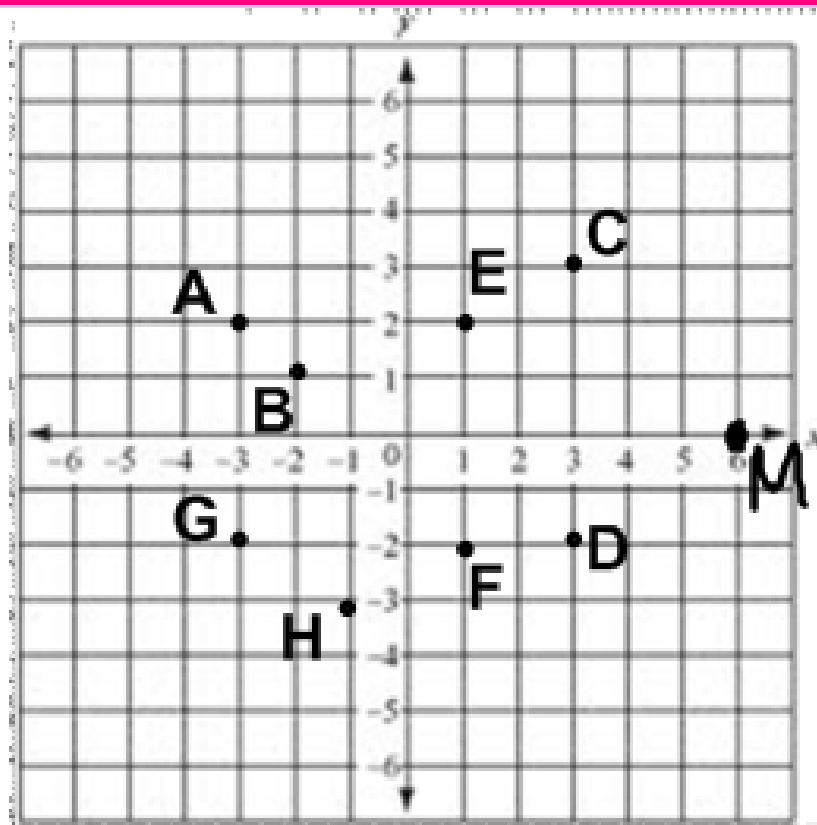
D.





ordered pair:





Ex: Find the coordinates of D. $(3, -2)$

Ex: Find two points in Quadrant III. G, H

Ex: Find two points with an x-coordinate of 1. E, F

Ex: Find a point with a y-coordinate of -3. H

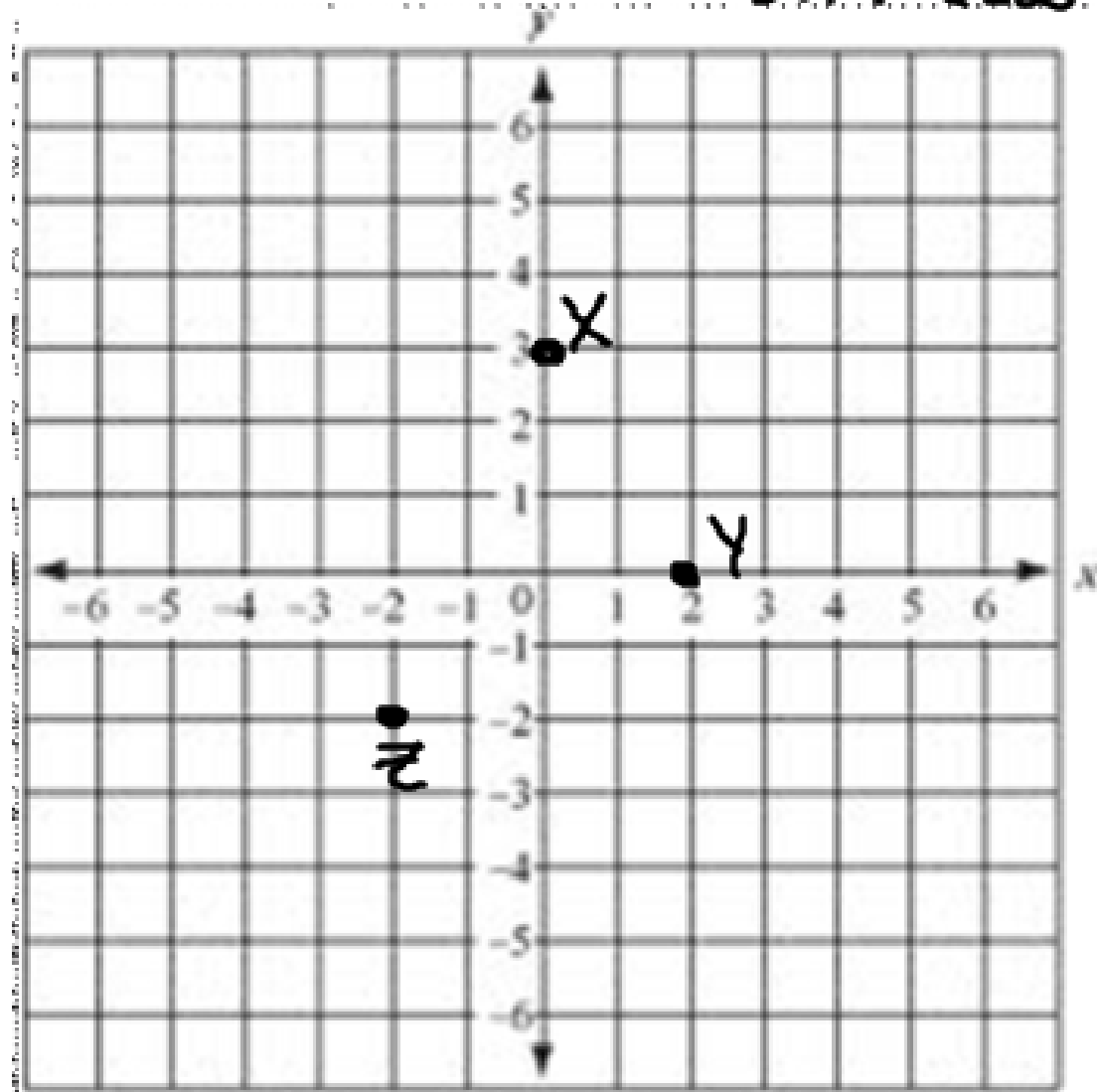
Graph the following points:

$X(0, 3)$

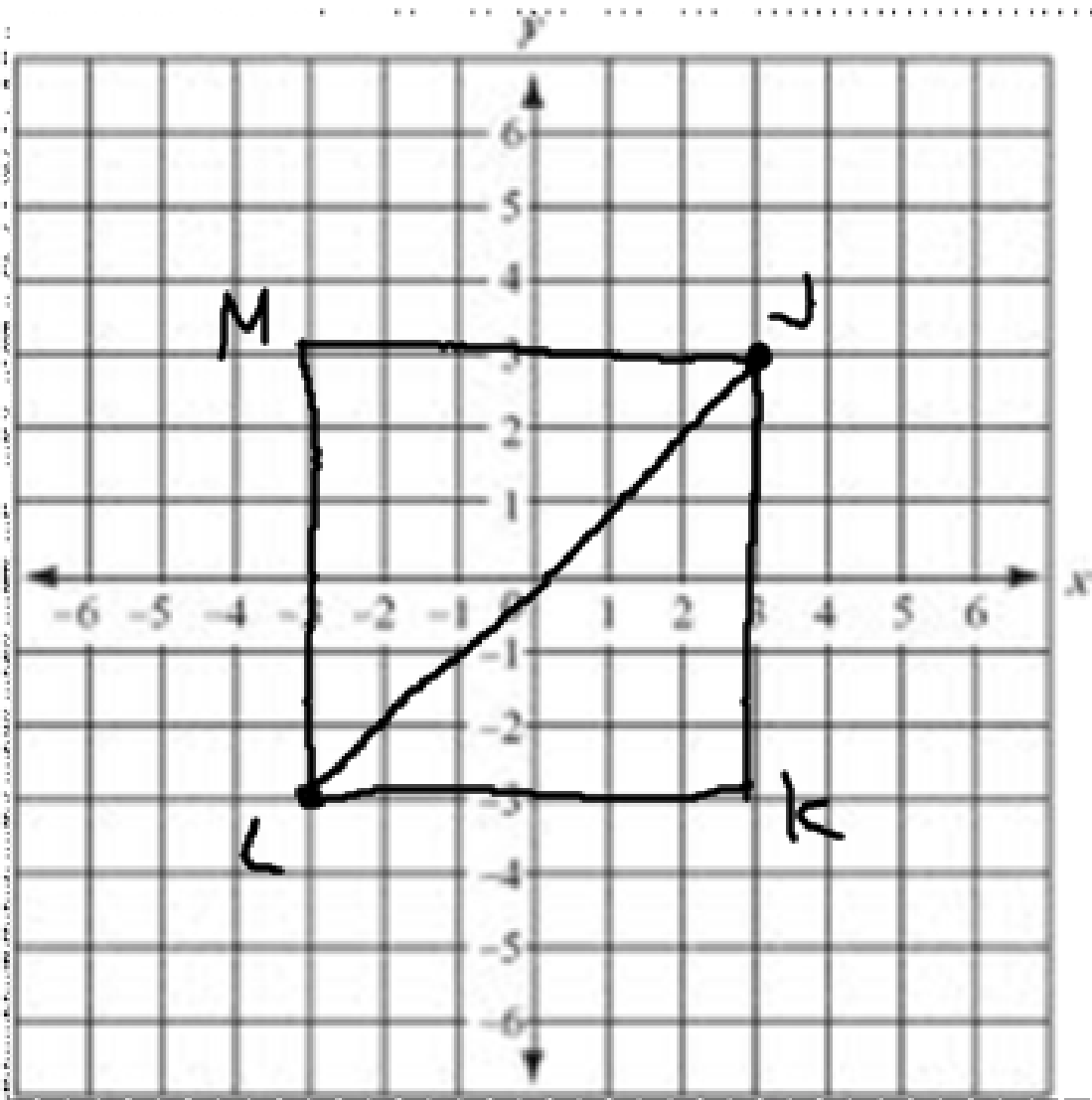
$Y(2, 0)$

$Z(-2, -2)$

left down



On a coordinate plane, sketch a square JKLM with a diagonal having endpoints J(3, 3) and L(-3, -3).





Homework:

7-2 WS evens